

Operation of the lumbar feature must **ONLY** be used with the mattress on the base to avoid possible injury.

**CAUTION:**

This adjustable bed is designed exclusively for in-home use.

**IN-HOME USE ONLY**

This bed is specifically designed to require no maintenance by you, the user. Any opening or compartment, if equipped) will void the warranty. Do not attempt to alter component wiring or adjust or modify the structure of the product in any way or the warranty will be void. Only those authorized may conduct repairs or part replacement on your adjustable bed.

**WARRANTY WARNING!**

- Do not use near people using or wearing medical devices. For household/residential use only.
- To disconnect, remove plug from outlet.
- Do not operate where aerosol (spray) products are being used or where oxygen is being administered.
- Do not use outdoors.
- Never drop or insert any object into any opening.
- Keep the cord away from heated surfaces.
- Do not use if it has a damaged cord or plug, is not working properly, has been dropped or damaged, or dropped in water.
- Attachments not recommended by the manufacturer.
- Use this base only for its intended use as described in these instructions. Do not use attachments not recommended by the manufacturer.
- Disabled persons, or pets.
- Close supervision is necessary when this base is used by, or near children, invalids,
- Unplug from outlet before putting on or taking off accessories.

To reduce the risk of burns, fire, electric shock, or injury to persons:

**WARNING!**

This may cause injury to persons or damage to base.

**MOVING AFTER INSTALLATION**

DO NOT SIT ON THE HEAD OR FOOT SECTIONS WHILE IN THE RAISED POSITION, OR DURING LIFT OR LOWERING CYCLES.

**LIFT WARNING**

The lift motors in this bed are NOT designed to operate continuously for more than one (1) minute over a nine (9) minute period, or approximately 12% duty cycle. To ensure reliable functionality and full life of this product, do not attempt to exceed these limits. NOTE: Attempting to circumvent or exceed this rating will shorten the life expectancy of the product and may void the warranty.

**LUBRICATION AND CLEANING**

This product is designed to be maintenance free. The lift motors are permanently lubricated and sealed—no additional lubrication is required. Do not apply lubricant to lift motor lead screws or any nylon nuts or the base may inadvertently creep downward from the elevated position.

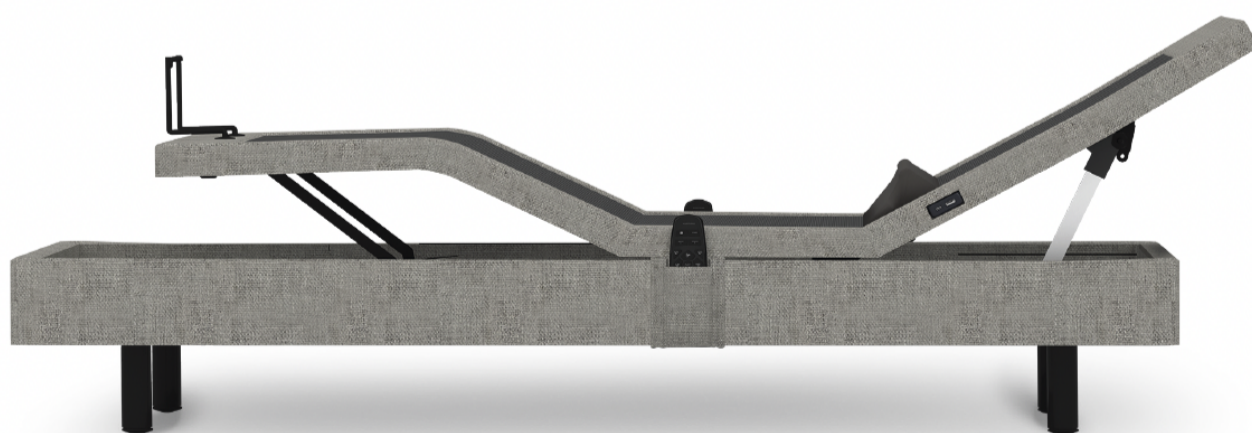
Immediately dispose of all packing materials, as they can pose a smothering risk to small children and pets. Injury could also occur if children or pets are permitted to play on or under the bed. Do not allow children to operate this bed without adult supervision.

**SMALL CHILDREN AND PETS WARNING**

## SAFETY INFORMATION



# SS600 USER MANUAL



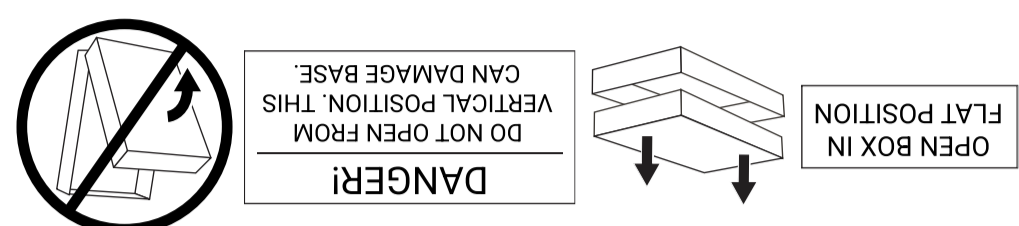
PRODUCT SUPPORT DOCUMENTS  
AND VIDEOS

Please take a moment and write down the serial number in the space provided below, in case you need to refer to it in the future. This information can be found by raising the headed section of the bed.

This number will be required for future service claims.

SKU: SS600      Serial Number \_\_\_\_\_

**ATTENTION!**



- The head and foot sections are not designed to individually support or lift this amount of weight.
- For optimal performance and integrity of structure, entering and exiting the adjustable bed with the bed in the flat position is recommended.
- NOTE: Exceeding the recommended weight restrictions could damage your adjustable bed and void your warranty.
- The structure of the bed will support the recommended weight when distributed evenly across the bed.
- Twin/XL: 400 lb (800 lb if using two twin XLs as a King)
- Full/XL: 500 lb
- Queen: 650 lb
- 1/pc King: 800 lb

**WEIGHT RESTRICTIONS:**

The recommended weight limits on our adjustable beds are:

**PRODUCT RATINGS**

It is possible that the vibrating feature of this bed may be interpreted falsely by some pacemakers as movement and/or exercise. This is common with any product that produces a vibrating motion, and may or may not affect your pacemaker. Please consult your physician with any concerns.

**CONSUMERS WITH PACEMAKERS**

This base is NOT designed for commercial or hospital use and is NOT designed to meet hospital standards. Do not use this base with TENT TYPE oxygen therapy equipment or use near explosive gases.

**HOSPITAL/COMMERCIAL DISCLAIMER**

This base is NOT designed for commercial or hospital use and is NOT designed to meet hospital standards. Do not use this base with TENT TYPE oxygen therapy equipment or use near explosive gases.

## ACCESSORIES

**HIGH PROFILE LEG KIT**  
Raise height of base to 18 1/2".  
SKU: 9.04.5189000

X6

**ZERO CLEARANCE KIT**  
NOTE: Compatible with SCK, Q, TXL sizes only.  
SKU: 9.04.5163000

X2

**HI-LO LIFT / ELEVATION KIT**  
Raise, lower and elevate base.  
SKU: SXHLE-TXL (TWIN XL KIT)  
SKU: SXHLEADPT-TXL (TWIN XL BRACKETS)  
SKU: SXHLE-Q (QUEEN KIT)  
SKU: SXHLEADPT-Q (QUEEN BRACKETS)

X2

**ELEVATION KIT**  
NOTE: Compatible with TXL and Q sizes only.  
SKU: SS600ELV-TXL (TWIN XL)  
SKU: SS600ELV-Q (QUEEN )  
SKU: S600ELV-SQ (SPLIT QUEEN )

X2



## DOWNLOAD THE APP

1. Warning – Danger of explosion if battery is incorrectly replaced. Replace only with the EL661 9V batteries and LR03 AAA batteries.
2. Be sure to follow the correct polarity when installing the batteries as indicated in the battery compartment. A reversed battery may cause damage to the device.
3. Do not mix different types of batteries together (e.g. Alkaline, Rechargeable and Carbon-zinc) or old batteries with fresh ones.
4. If the device is not to be used for a long period of time, remove the batteries to prevent damage or injury from possible battery leakage.
5. Do not try to recharge a battery not intended to be recharged; it can overheat and rupture. (Follow battery manufacturer's directions.)

**BATTERY PRECAUTIONS**

1. It has a damaged cord or plug
2. It is not working properly
3. It has been dropped or damaged

Discontinue use of this adjustable bed and contact the manufacturer for repair if:

Use only indoors.

Always unplug this adjustable bed from the electrical outlet before any cleaning or maintenance of the adjustable bed. To safely disconnect, remove the plug from the outlet. Keep cord away from heated surfaces.

**ELECTRICAL SAFETY**

**WARNING**  
TO PREVENT FIRE OR SHOCK HAZARD, DO NOT EXPOSE THIS UNIT TO MOISTURE.

3. Any change to the antenna or the device could result in the device exceeding the RF exposure requirements and void the user's right to operate the device. The input voltage is AC100-240 50/60HZ; the output voltage is DC29V 1.8A. Total USB power output is 2 AMP.

2. This device must accept any interference received, including interference that may cause undesired operation of the device.

1. This device may not cause interference.

This device complies with part 15 of the FCC Rules and Industry Canada's license exempt RSS. Operation is subject to the following two conditions:

**RADIO FREQUENCY IS 2.4GHZ.**

## TROUBLESHOOTING

If the base fails to operate, investigate the symptoms and possible solutions provided below:

Remote control illuminates and appears to be operable, but no features of the base will activate.

- Unplug power cord, wait 30 seconds and plug in to reset electronic components.
- Defective surge protection device or electrical outlet. Test outlet by plugging in another working appliance.
- Electrical circuit breaker may be tripped. Check electrical service breaker box to verify.
- Re-pair the remote control (see Pairing Remote section of this manual for programming procedures).
- Replace batteries in the remote control & re-pair remote control.

No features of the base will activate.

- Unplug power cord, wait 30 seconds and plug in to reset electronic components.
- Defective surge protection device or electrical outlet. Test outlet by plugging in another working appliance.
- Electrical circuit breaker may be tripped. Check electrical circuit breaker box to verify.

Remote control will not illuminate.

- Replace batteries in the remote control.
- Remote back light buttons should stay lit for 5 seconds when button is pushed.

Head section will elevate, ut will not return to the horizontal (flat) position.

- Base mechanism may be obstructed. Elevate base and check for obstruction. Remove obstruction.
- Headboard may be too close to the edge of the mattress. Verify that distance between headboard brackets and mattress is sufficient. Adjust if required.

Head or foot lift function has minor interference during operation.

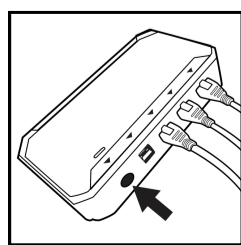
- Check batteries in remote, replace if necessary.
- Make sure that you are following the duty cycle of the motor (do not operate more than one (1) minute over a nine (9) minute period, or approximately a 12% duty cycle).
- Press the lift buttons squarely and accurately.
- Control box may be experiencing common Radio Frequency Interference from other radio transmitting devices (see Pairing Remote section).

Reset remote to original factory settings.

- To reset the factory ANTI-SNORE, ZERO GRAVITY, MEMORY A, and MEMORY B settings, hold down the FLAT and ZERO-GRAVITY buttons until the back light blinks.

Bases are not well synced to one another.

- Refer to the REPROGRAMMING REMOTE section.



**NOTE:**  
EMERGENCY LOWERING: If you cannot find the remote control, locate, press and hold the PAIR button located on the main control box on the bottom of the bed (shown to the left).



Accessory Orders and Customer Service Warranty information is available at [symphonysleep.com](http://symphonysleep.com)

## RESOURCES

**NOTE:**  
Height will increase by 3.5" when used with ELEVATION KIT.

HI-LO LIFT KIT	HEIGHT FROM FLOOR
MINIMUM	13"
MAXIMUM	25.5"

LEG CONFIGURATION	HEIGHT FROM FLOOR
STANDARD 3-IN-1	15"
TWO LEG SECTIONS INSTALLED	11.5"
ONE LEG SECTION INSTALLED	8"
OPTIONAL HIGH PROFILE LEG	18.5"

## BASE HEIGHT GUIDE

## REPROGRAMMING REMOTE

When syncing 2 TXL, SQ, SCK bases, the ANTI-SNORE, ZERO GRAVITY, MEMORY A, and MEMORY B may need to be reprogrammed to match the 2 bases to the same program.

**1 ANTI-SNORE**  
After connecting the sync cable into both bases, press the FLAT button on the remote.

**2** Press the HEAD UP button until the 2 bases are at a 10 degree angle. Push and hold the ANTI-SNORE button until the remote back lights blink.

**1 ZERO GRAVITY**  
Press the FLAT button on the remote.

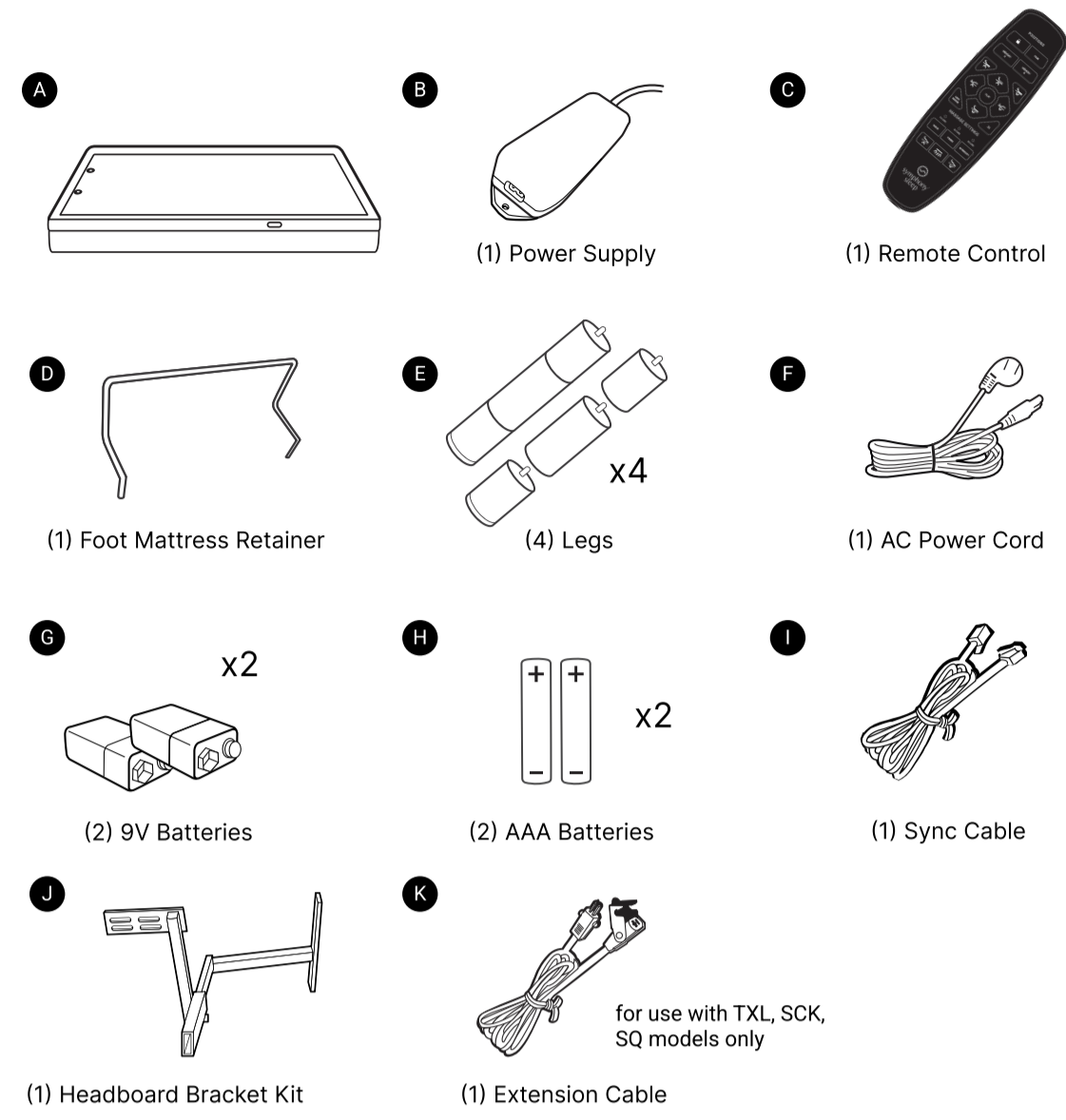
**2** Press the HEAD UP button until the 2 bases reach the 15 degree angle. Next, push FOOT UP button until the foot section of both bases reach the 25 degree angle. Next, press and hold the ZERO GRAVITY button until the remote back lights blink.

**1 SETTING MEMORY A OR MEMORY B**  
Press the FLAT button on the remote.

**2** Using the HEAD UP and FOOT UP, adjust the base to a comfortable position. Next, press and hold MEMORY A button until the remote back lights blink. Repeat this process for the MEMORY B position.

## REMOTE GUIDE

Before discarding any packing materials, check the adjustable base shipping carton and verify the following items are included:

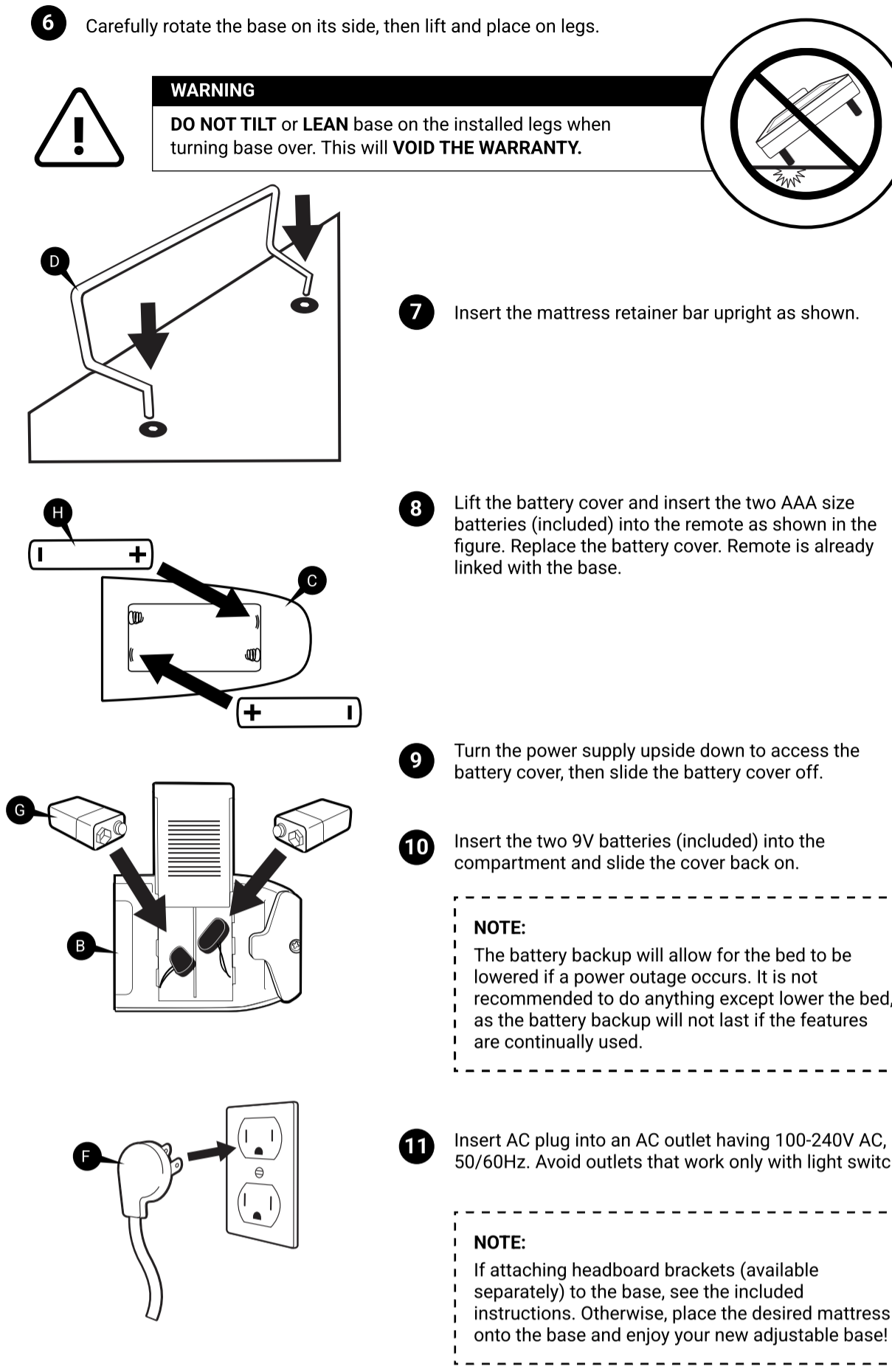
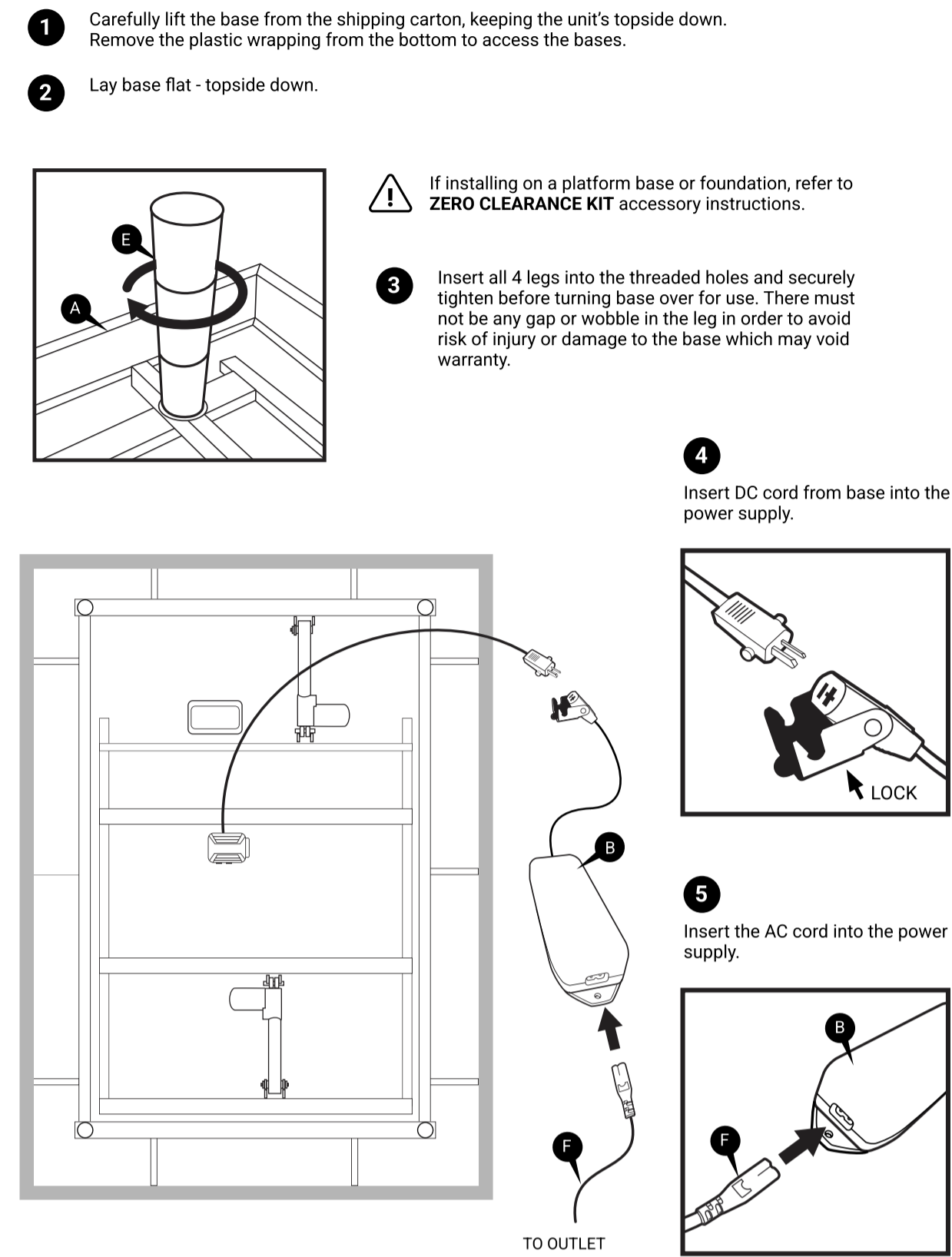


**IMPORTANT:**  
USE 2 PEOPLE TO LIFT BASE TO AVOID DAMAGE.

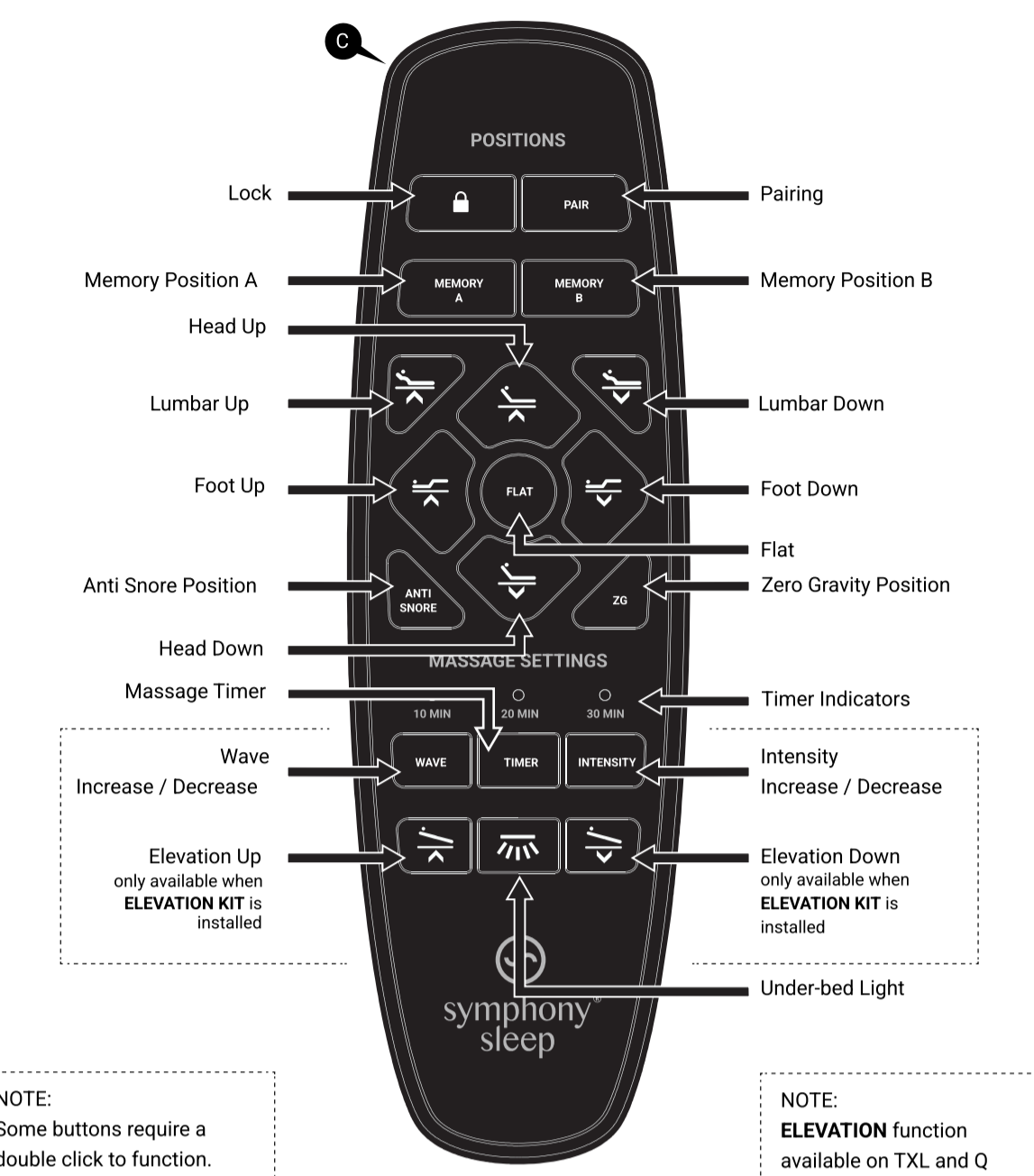
**NOTE:**  
Carefully lift base from the shipping carton, keeping the unit's top-side down. Remove the plastic wrapping from the bottom to access the base.

## ASSEMBLY

It is HIGHLY recommended to use two people for the installation of this product. To assemble, please perform the following steps:



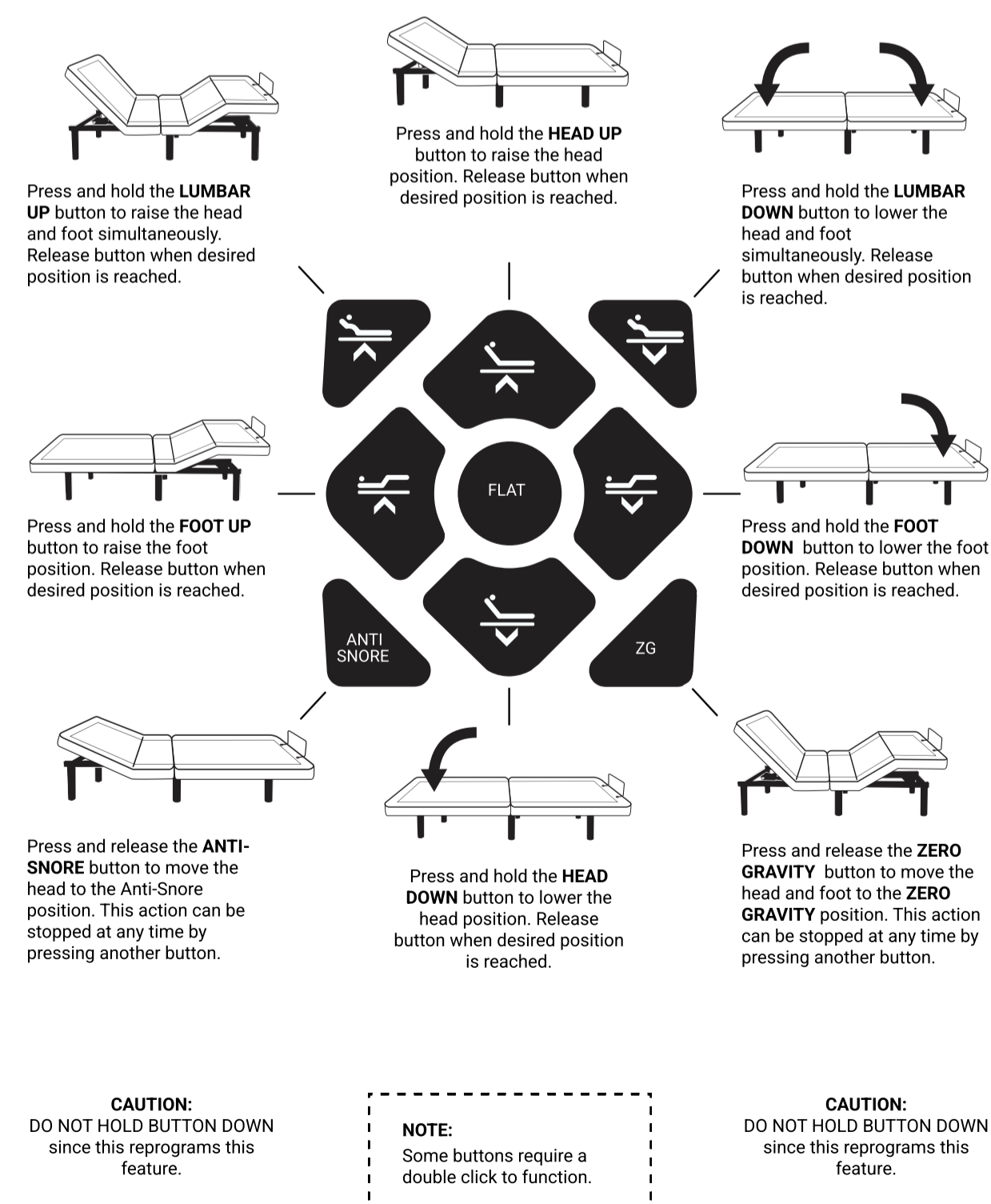
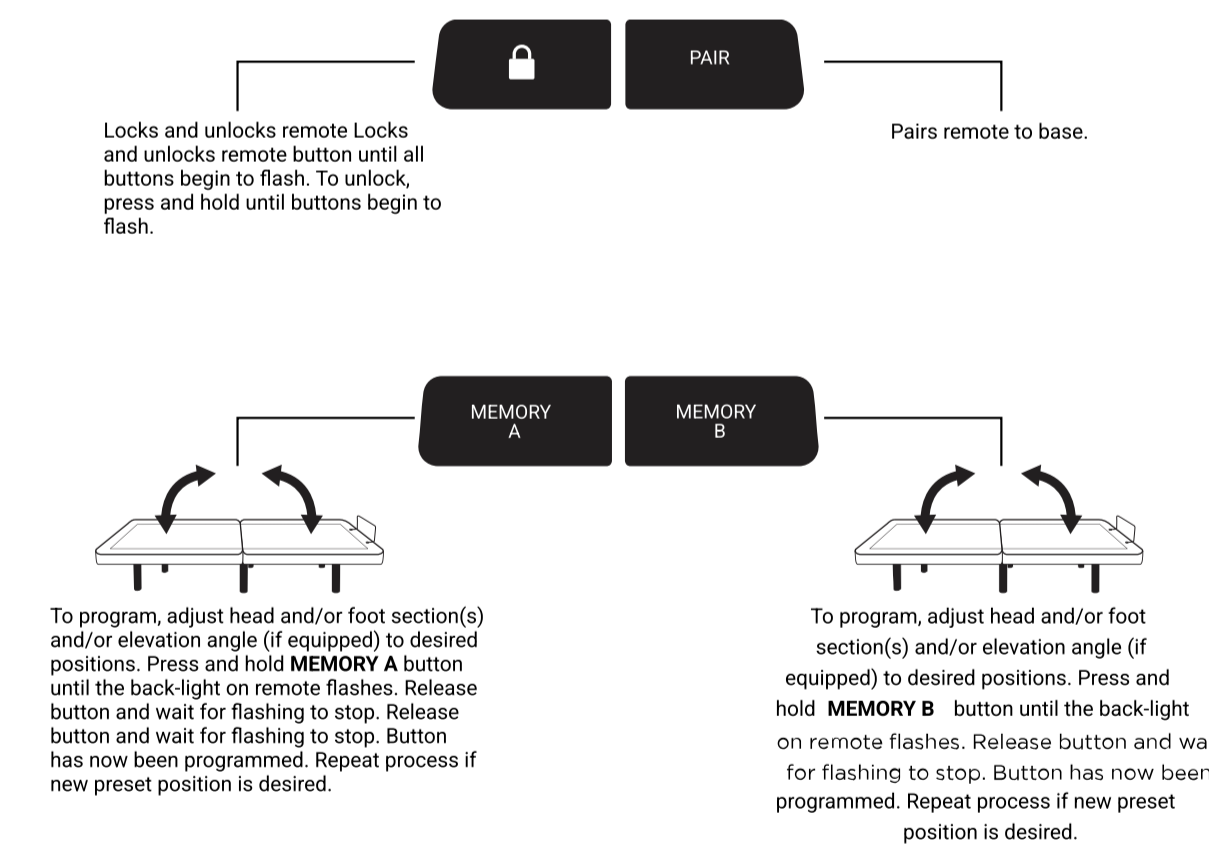
## REMOTE GUIDE



**NOTE:** Some buttons require a double click to function.

**NOTE:** ELEVATION function available on TXL and Q sizes only with optional elevation kit.

## OPERATION

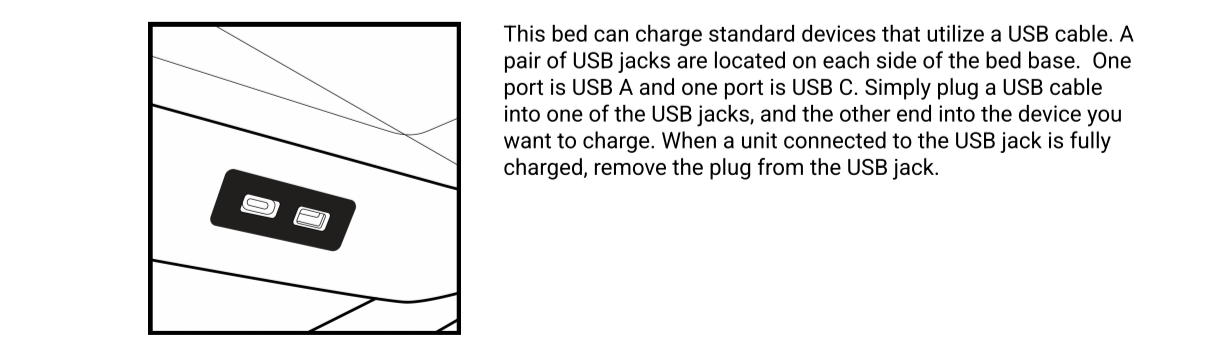


**CAUTION:** DO NOT HOLD BUTTON DOWN since this reprograms this feature.

**NOTE:** Some buttons require a double click to function.

**CAUTION:** DO NOT HOLD BUTTON DOWN since this reprograms this feature.

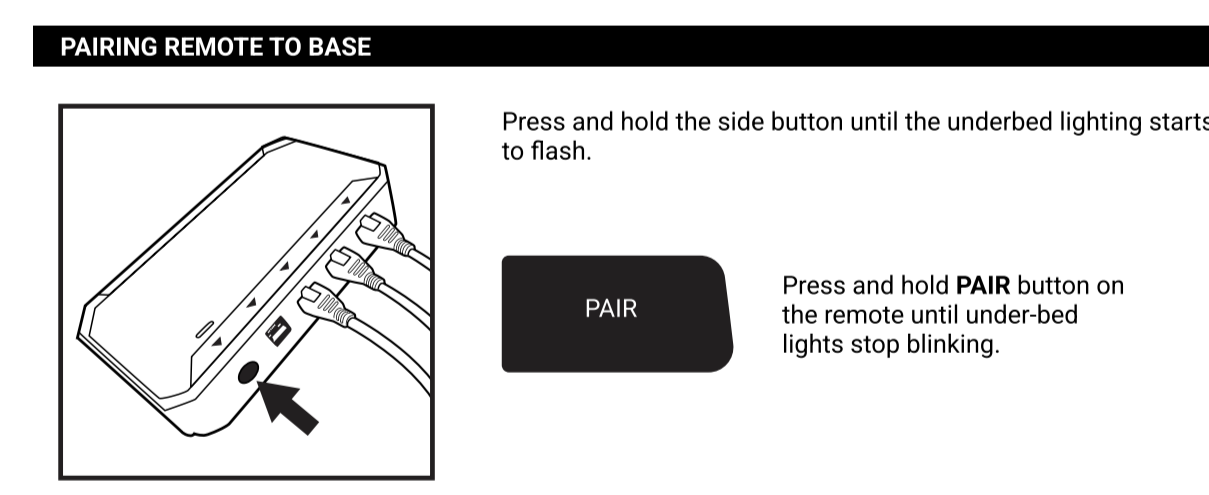
## USING USB JACKS



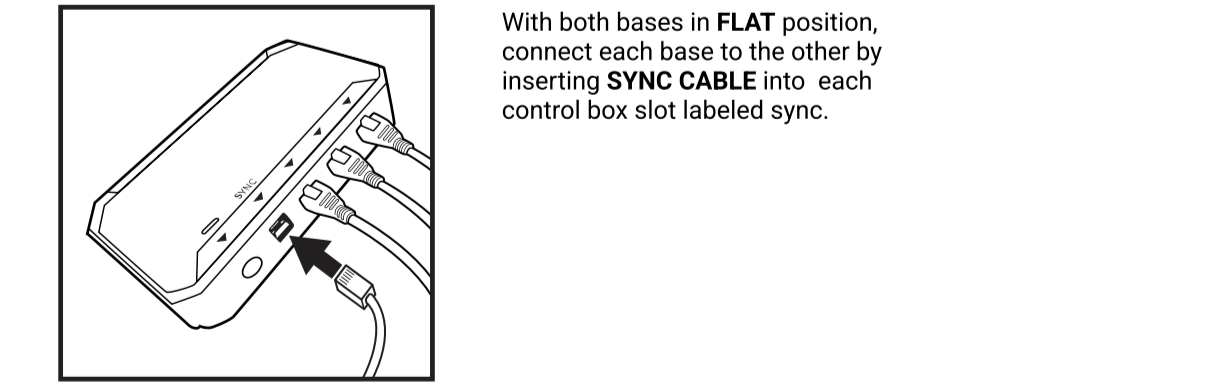
This bed can charge standard devices that utilize a USB cable. A pair of USB jacks are located on each side of the bed base. One port is USB A and one port is USB C. Simply plug a USB cable into one of the USB jacks, and the other end into the device you want to charge. When a unit connected to the USB jack is fully charged, remove the plug from the USB jack.

## PAIRING REMOTE

**NOTE:** Your base comes with a ready-to-use, factory paired remote. Pairing instructions are for replacement remotes or trouble shooting purposes.



**SYNCING 2 BASES TO ACT AS ONE**  
If SYNCING 2 bases (TXL, SCK, SQ) together, follow these instructions.



With both bases in FLAT position, connect each base to the other by inserting SYNC CABLE into each control box slot labeled sync.