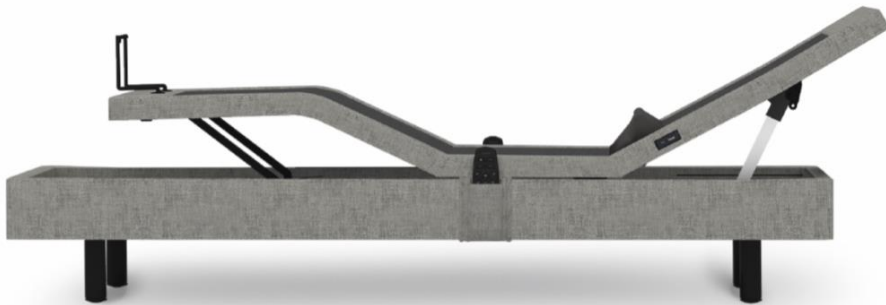




SS600

USER MANUAL



PRODUCT SUPPORT DOCUMENTS
AND VIDEOS

Please take a moment and write down the serial number in the space provided below, in case you need to refer to it in the future. This information can be found by raising the headed section of the bed.

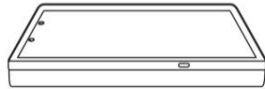
This number will be required for future service claims.

SKU: SS600 Serial Number _____

WHAT'S INCLUDED

Before discarding any packing materials, check the adjustable base shipping carton and verify the following items are included:

A



B



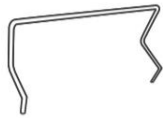
(1) Power Supply

C



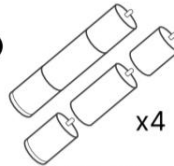
(1) Remote Control

D



(1) Foot Mattress Retainer

E



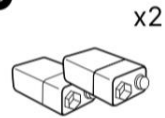
(4) Legs

F



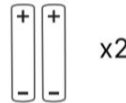
(1) AC Power Cord

G



(2) 9V Batteries

H



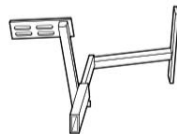
(2) AAA Batteries

I



(1) Sync Cable

J



(1) Headboard Bracket Kit

K



(1) Extension Cable

for use with TXL, SCK,
SQ models only

IMPORTANT:

USE 2 PEOPLE TO LIFT BASE TO AVOID DAMAGE.

NOTE:

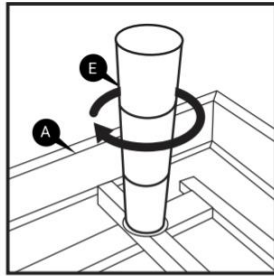
Carefully lift base from the shipping carton, keeping the unit's top-side down.
Remove the plastic wrapping from the bottom to access the base.



ASSEMBLY

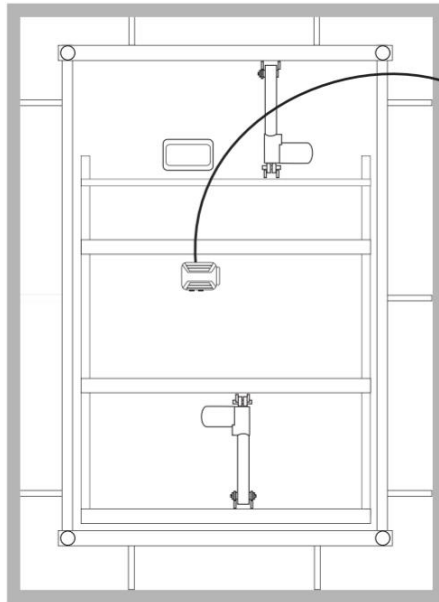
It is **HIGHLY** recommended to use two people for the installation of this product.
To assemble, please perform the following steps:

- 1** Carefully lift the base from the shipping carton, keeping the unit's topside down. Remove the plastic wrapping from the bottom to access the bases.
- 2** Lay base flat - topside down.

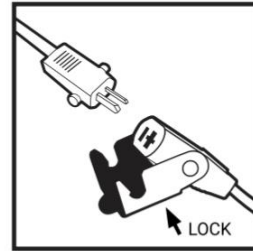


! If installing on a platform base or foundation, refer to **ZERO CLEARANCE KIT** accessory instructions.

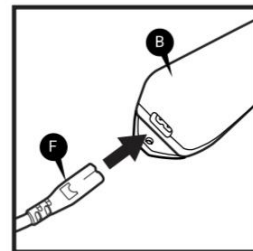
- 3** Insert all 4 legs into the threaded holes and securely tighten before turning base over for use. There must not be any gap or wobble in the leg in order to avoid risk of injury or damage to the base which may void warranty.



- 4** Insert DC cord from base into the power supply.



- 5** Insert the AC cord into the power supply.



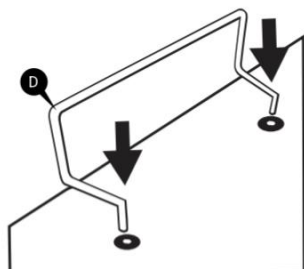
TO OUTLET

- 6 Carefully rotate the base on its side, then lift and place on legs.

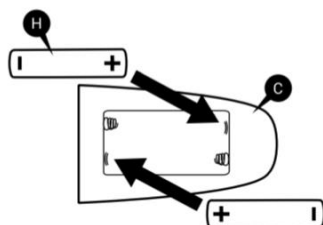


WARNING

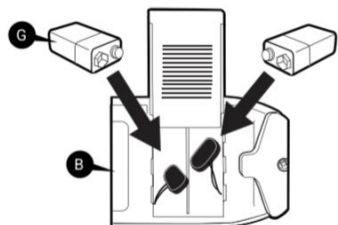
DO NOT TILT or LEAN base on the installed legs when turning base over. This will **VOID THE WARRANTY**.



- 7 Insert the mattress retainer bar upright as shown.



- 8 Lift the battery cover and insert the two AAA size batteries (included) into the remote as shown in the figure. Replace the battery cover. Remote is already linked with the base.

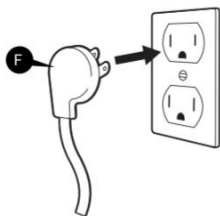


- 9 Turn the power supply upside down to access the battery cover, then slide the battery cover off.

- 10 Insert the two 9V batteries (included) into the compartment and slide the cover back on.

NOTE:

The battery backup will allow for the bed to be lowered if a power outage occurs. It is not recommended to do anything except lower the bed, as the battery backup will not last if the features are continually used.

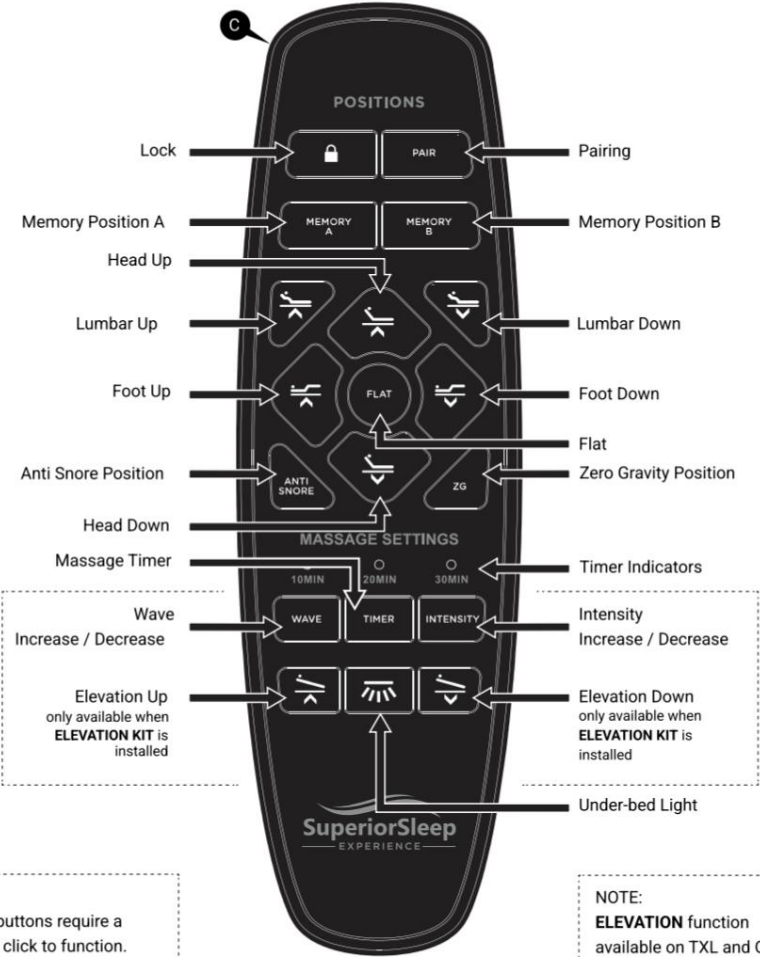


- 11 Insert AC plug into an AC outlet having 100-240V AC, 50/60Hz. Avoid outlets that work only with light switch.

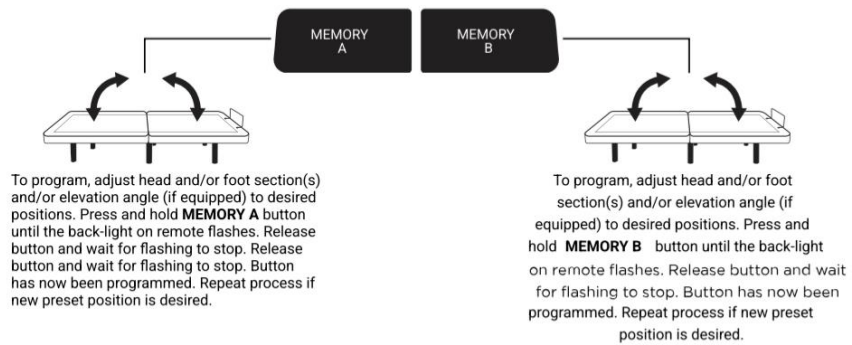
NOTE:

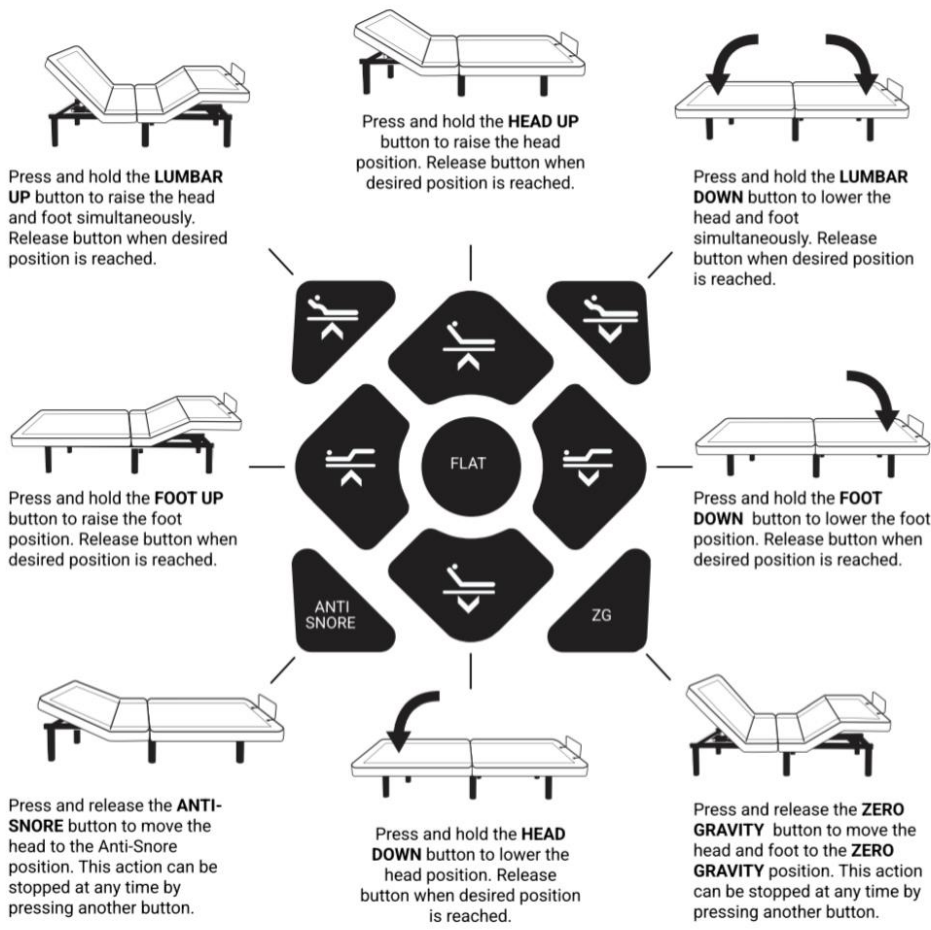
If attaching headboard brackets (available separately) to the base, see the included instructions. Otherwise, place the desired mattress onto the base and enjoy your new adjustable base!

REMOTE GUIDE



OPERATION

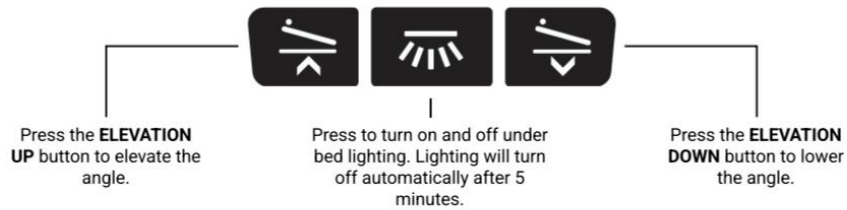
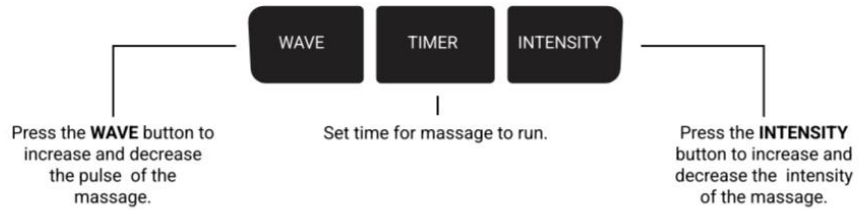




CAUTION:
DO NOT HOLD BUTTON DOWN since this reprograms this feature.

NOTE:
Some buttons require a double click to function.

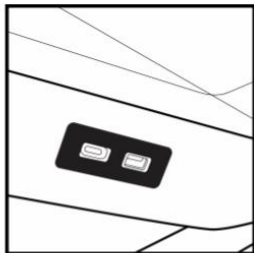
CAUTION:
DO NOT HOLD BUTTON DOWN since this reprograms this feature.



NOTE:
ELEVATION UP and **DOWN** feature requires optional accessory (page 17) to function.

NOTE:
ELEVATION function available on TXL and Q sizes only with optional elevation kit.

USING USB JACKS



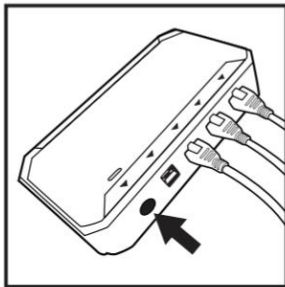
This bed can charge standard devices that utilize a USB cable. A pair of USB jacks are located on each side of the bed base. One port is USB A and one port is USB C. Simply plug a USB cable into one of the USB jacks, and the other end into the device you want to charge. When a unit connected to the USB jack is fully charged, remove the plug from the USB jack.

PAIRING REMOTE

NOTE:

Your base comes with a ready-to-use, factory paired remote. Pairing instructions are for replacement remotes or trouble shooting purposes.

PAIRING REMOTE TO BASE



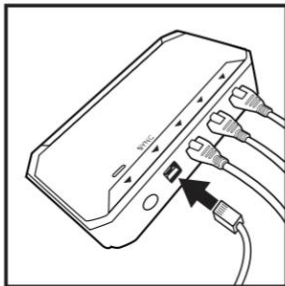
Press and hold the side button until the underbed lighting starts to flash.

PAIR

Press and hold **PAIR** button on the remote until under-bed lights stop blinking.

SYNCING 2 BASES TO ACT AS ONE

If **SYNCING** 2 bases (TXL, SCK, SQ) together, follow these instructions.



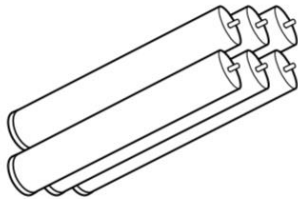
With both bases in **FLAT** position, connect each base to the other by inserting **SYNC CABLE** into each control box slot labeled sync.

ACCESSORIES

HIGH PROFILE LEG KIT

Raise height of base to 18 1/2".

SKU: 9.04.5189000

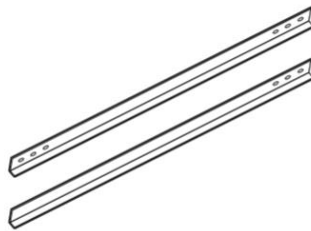


X6

ZERO CLEARANCE KIT

NOTE: Compatible with SCK, Q, TXL sizes only.

SKU: 9.04.5193000



X2

HI-LO LIFT / ELEVATION KIT

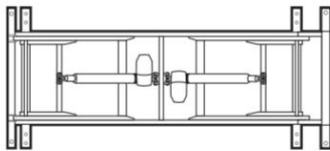
Raise, lower and elevate base.

SKU: SXHLE-TXL (TWIN XL KIT)

SKU: SXHLEADPT-TXL (TWIN XL BRACKETS)

SKU: SXHLE-Q (QUEEN KIT)

SKU: SXHLEADPT-Q (QUEEN BRACKETS)



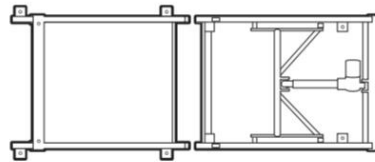
ELEVATION KIT

NOTE: Compatible with TXL and Q sizes only.

SKU: SS600ELV-TXL (TWIN XL)

SKU: SS600ELV-Q (QUEEN)

SKU: S600ELV-SQ (SPLIT QUEEN)



TROUBLESHOOTING

If the base fails to operate, investigate the symptoms and possible solutions provided below:

Remote control illuminates and appears to be operable, but no features of the base will activate.

- Unplug power cord, wait 30 seconds and plug in to reset electronic components.
 - Defective surge protection device or electrical outlet. Test outlet by plugging in another working appliance.
 - Electrical circuit breaker may be tripped. Check electrical service breaker box to verify.
 - Re-pair the remote control (see Pairing Remote section of this manual for programming procedures).
 - Replace batteries in the remote control & re-pair remote control.
-

No features of the base will activate.

- Unplug power cord, wait 30 seconds and plug in to reset electronic components.
 - Defective surge protection device or electrical outlet. Test outlet by plugging in another working appliance.
 - Electrical circuit breaker may be tripped. Check electrical circuit breaker box to verify.
-

Remote control will not illuminate.

- Replace batteries in the remote control.
 - Remote back light buttons should stay lit for 5 seconds when button is pushed.
-

Head section will elevate, ut will not return to the horizontal (flat) position.

- Base mechanism may be obstructed. Elevate base and check for obstruction. Remove obstruction.
 - Headboard may be too close to the edge of the mattress. Verify that distance between headboard brackets and mattress is sufficient. Adjust if required.
-

Head or foot lift function has minor interference during operation.

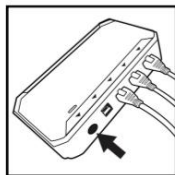
- Check batteries in remote, replace if necessary.
 - Make sure that you are following the duty cycle of the motor (do not operate more than one (1) minute over a nine (9) minute period, or approximately a 12% duty cycle).
 - Press the lift buttons squarely and accurately.
 - Control box may be experiencing common Radio Frequency Interference from other radio transmitting devices (see Pairing Remote section).
-

Reset remote to original factory settings.

- To reset the factory ANTI-SNORE, ZERO GRAVITY, MEMORY A, and MEMORY B settings, hold down the FLAT and ZERO-GRAVITY buttons until the back light blinks.
-

Bases are not well synced to one another.

- Refer to the REPROGRAMMING REMOTE section.



NOTE:

EMERGENCY LOWERING: If you cannot find the remote control, locate, press and hold the PAIR button located on the main control box on the bottom of the bed (shown to the left).

HOSPITAL/COMMERCIAL DISCLAIMER

This base is NOT designed for commercial or hospital use and is NOT designed to meet hospital standards. Do not use this base with TENT TYPE oxygen therapy equipment or use near explosive gases.

CONSUMERS WITH PACEMAKERS

It is possible that the vibrating feature of this bed may be interpreted falsely by some pacemakers as movement and/or exercise. This is common with any product that produces a vibrating motion, and may or may not affect your pacemaker. Please consult your physician with any concerns.

PRODUCT RATINGS

Lift Motor Restrictions:

The lift motors in this bed are NOT designed to operate continuously for more than one (1) minute over a nine (9) minute time period, or approximately 12% duty cycle. To ensure reliable functionality and full life of this product, do not attempt to exceed these limits. NOTE: Attempting to circumvent or exceed this rating will shorten the life expectancy of the product and may void the warranty.

WEIGHT RESTRICTIONS:

The recommended weight limits on our adjustable beds are:

- 1/pc King: 800 lb
- Queen: 650 lb
- Full/XL: 500 lb
- Twin/XL: 400 lb (800 lb if using two twin XLs as a King)
- The structure of the bed will support the recommended weight when distributed evenly across the bed.
- The head and foot sections are not designed to individually support or lift this amount of weight.
- For optimal performance and integrity of structure, entering and exiting the adjustable bed with the bed in the flat position is recommended
- NOTE: Exceeding the recommended weight restrictions could damage your adjustable bed and void your warranty.



ATTENTION!

IMPORTANT SAFETY INSTRUCTIONS. SAVE THIS MANUAL! PLEASE READ THESE INSTRUCTIONS THOROUGHLY BEFORE USING THIS PRODUCT. PROPER OPERATION OF YOUR ADJUSTABLE BED IS NECESSARY TO ENSURE THE LONG LIFE AND DURABILITY YOU EXPECT FROM A HIGH-QUALITY PRODUCT. THE MANUFACTURER HAS TESTED AND INSPECTED THIS PRODUCT PRIOR TO SHIPMENT.



RADIO FREQUENCY IS 2.4Ghz.

This device complies with part 15 of the FCC Rules and Industry Canada's license exempt RSSs. Operation is subject to the following two conditions:

1. This device may not cause interference
2. This device must accept any interference received, including interference that may cause undesired operation of the device.
3. Any change to the antenna or the device could result in the device exceeding the RF exposure requirements and void the user's right to operate the device. The input voltage is AC100-240 50/60HZ; the output Voltage is DC29V 1.8A. Total USB power output is 2 AMP.

WARNING
TO PREVENT FIRE OR SHOCK HAZARD, DO NOT EXPOSE THIS UNIT TO MOISTURE.

ELECTRICAL SAFETY

Always unplug this adjustable bed from the electrical outlet before any cleaning or maintenance of the adjustable bed. To safely disconnect, remove the plug from the outlet. Keep cord away from heated surfaces. Use only indoors.

Discontinue use of this adjustable bed and contact the manufacturer for repair if:

1. It has a damaged cord or plug
2. It is not working properly
3. It has been dropped or damaged.

FOR OPTIMAL SAFETY, YOUR ADJUSTABLE BED SHOULD BE PLUGGED INTO A SURGE PROTECTOR (not supplied with this adjustable bed).

BATTERY PRECAUTIONS

Follow these precautions when using batteries in this device:

1. Warning – Danger of explosion if battery is incorrectly replaced. Replace only with the 6LR61 9V batteries and LR03 AAA batteries.
2. Be sure to follow the correct polarity when installing the batteries as indicated in the battery compartment. A reversed battery may cause damage to the device.
3. Do not mix different types of batteries together (e.g. Alkaline, Rechargeable and Carbon-zinc) or old batteries with fresh ones.
4. If the device is not to be used for a long period of time, remove the batteries to prevent damage or injury from possible battery leakage.
5. Do not try to recharge a battery not intended to be recharged; it can overheat and rupture. (Follow battery manufacturer's directions.)

DOWNLOAD THE APP

This adjustable base is compatible with our Symphony Sleep for Bluetooth remote app. Go to www.symphonysleep.com to learn more. Download on Apple App Store or Google Play



BASE HEIGHT GUIDE

LEG CONFIGURATION	HEIGHT FROM FLOOR
STANDARD 3-IN-1	15"
TWO LEG SECTIONS INSTALLED	11.5"
ONE LEG SECTION INSTALLED	8"
OPTIONAL HIGH PROFILE LEG	18.5"

HI-LO LIFT KIT	HEIGHT FROM FLOOR
MINIMUM	13"
MAXIMUM	25.5"

NOTE:

Height will increase by 3.5" when used with ELEVATION KIT.

RESOURCES

Accessory Orders and Customer Service Warranty information is available at [symphonysleep.com](https://www.symphonysleep.com)



**PRODUCT SUPPORT
DOCUMENTS AND
VIDEOS**

Warranty Service
888-821-1555

Customer Service
(+1) 314-499-8869